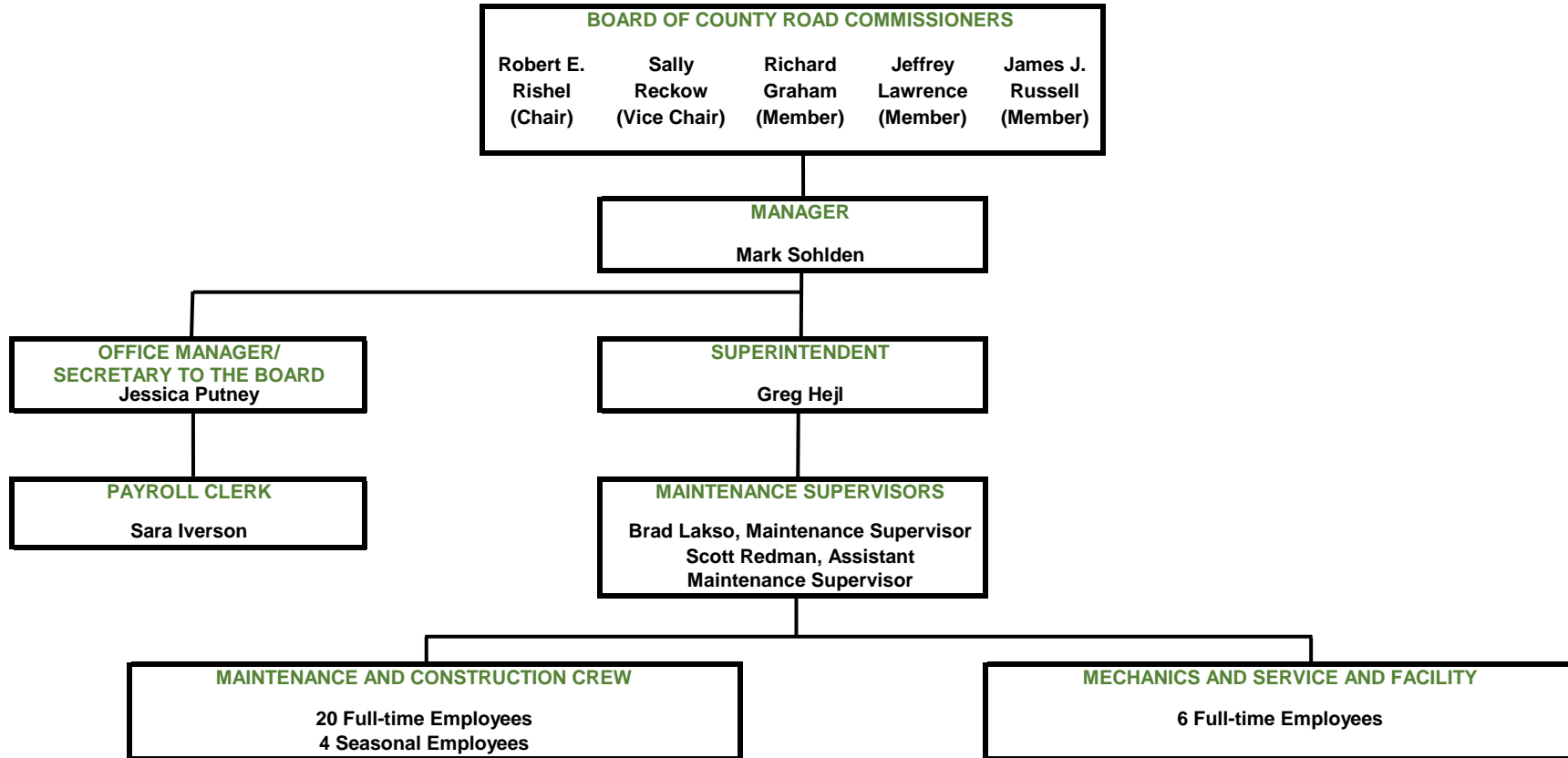


# MANISTEE COUNTY ROAD COMMISSION ORGANIZATIONAL CHART FOR THE YEAR 2022



**MARCH, 2022**

5 Road Commissioners  
 6 Administrative/Supervisory Employees  
 26 Full-time Hourly Employees  
 37 Employees Total

4 Seasonal Employees (Typically December thru March)

Date: 3/02/22

C:\Users\Jess\Desktop\MCRC\Web Page\MCRC Organizational Chart\_2022 - Lines.xlsx]Sheet1